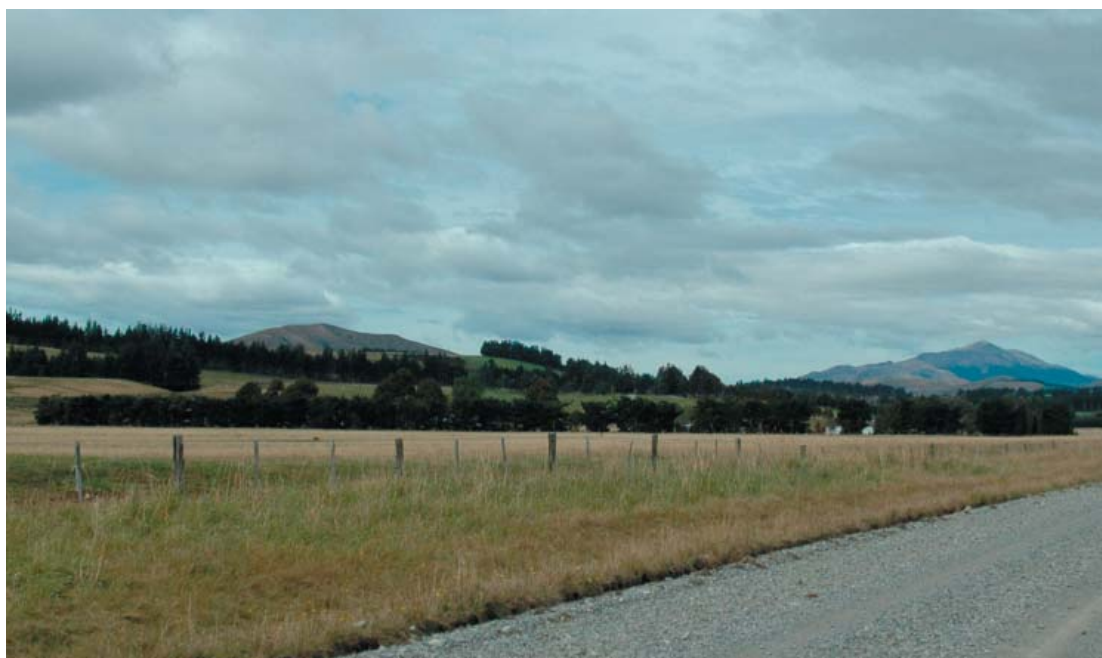


## 29. KAKAPO ROAD-LADIES MILE/TALBOT ROAD



### LANDSCAPE CHARACTER

A valley between parallel glacial moraine deposits and stretching between the Upukerora River and the Whitestone River. Paddocks of largely flat, grazed farmland with some exotic shelterbelts and scattered farm dwellings. Small areas of forestry against Upukerora River terraces. A contained landscape but scale, and ability to see mountains beyond, expands the open character of the area.

### KEY CHARACTERISTICS

- Grazed valley floor between two large rivers

### LANDSCAPE CHARACTER SENSITIVITY: MODERATELY LOW with sensitive river boundaries

*Natural Factors:* Influences from river boundaries and mountains in distance

*Cultural Factors:* Farming patterns overlay landscape

*Quality/Condition:* Highly modified

*Aesthetic Factors:* Highly legible valley floor within lateral series of glacial deposits

### VISUAL SENSITIVITY: MODERATE

*Visibility:* Most of the area visible from either Kakapo Road, Ladies Mile or Talbot Road

*Populations:* Most travellers on these roads likely to be residents, recreationalists or visitors to Takaro Lodge

### LANDSCAPE VALUES

- Legible valley floor between moraine deposits and two large rivers